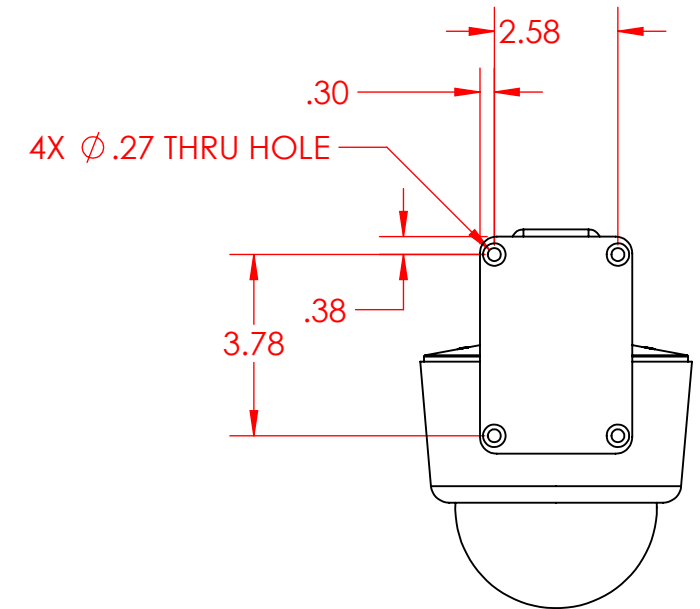
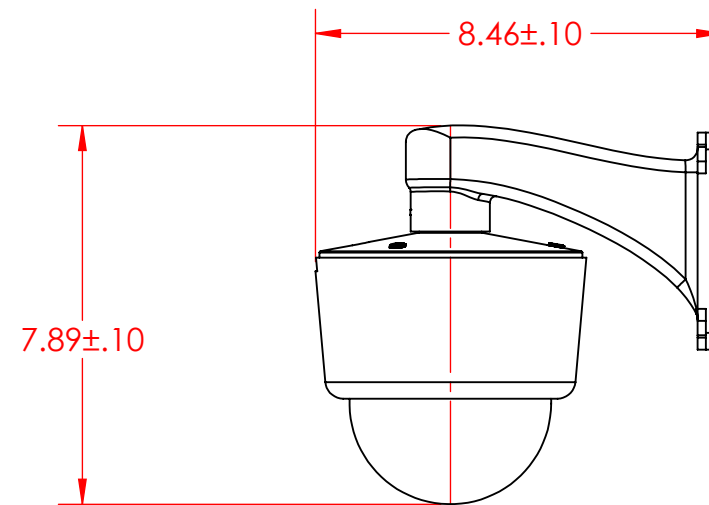
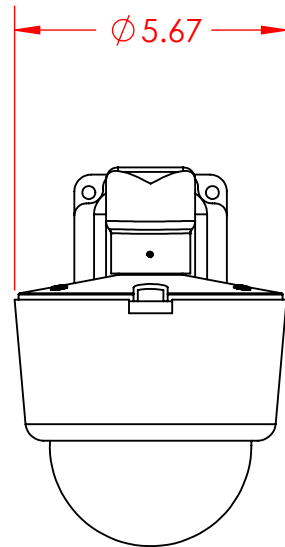
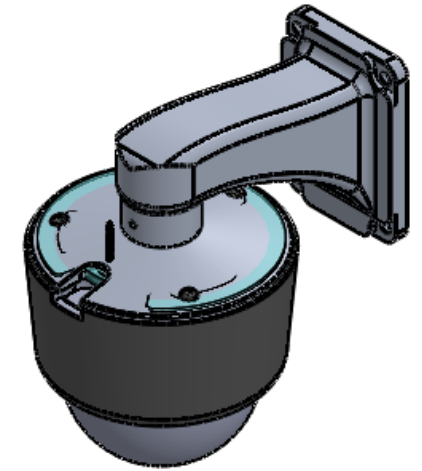
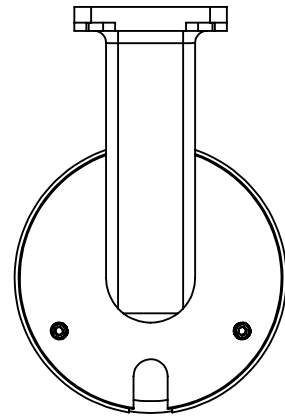


REVISIONS

NO.	DESCRIPTION	DATE	BY	APPD
1	ADD MODEL "PTD-HD30-15-C"	01/11/23	TT	BR



NOTES:

1. DRAWING FOR REFERENCE ONLY
2. CAD FILE ON HAND
3. DIMENSIONS ARE IN INCHES; SEE IVC2257 FOR MOUNTING REFERENCE

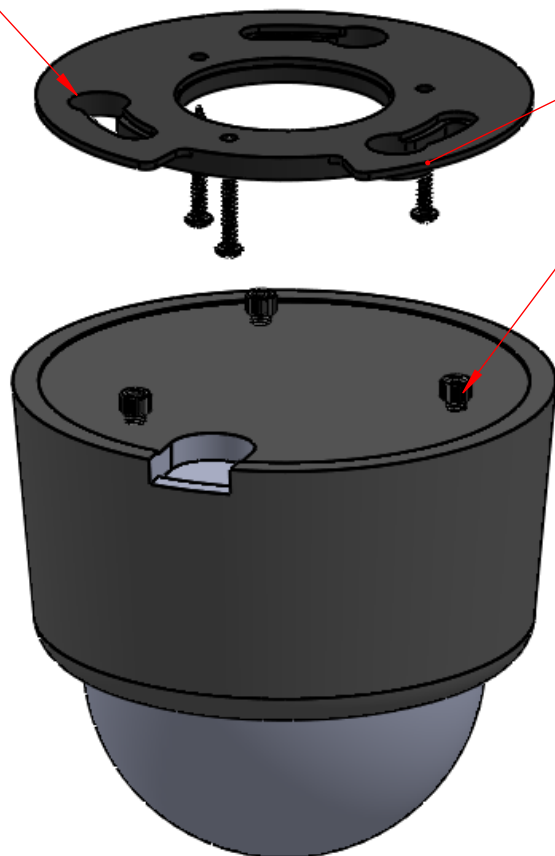
RELEASED FOR PRODUCTION: YES NO

PART NO.		INDUSTRIAL VIDEO & CONTROL			
N/A		330 NEVADA STREET - NEWTON, MA 02460			
		PTZ-HD30-15-C			
DIMENSIONS ARE IN:		DESIGNED FOR:	DRAWN BY:	DATE:	SHEET NO:
<input checked="" type="checkbox"/> INCHES <input type="checkbox"/> MILLIMETERS <input type="checkbox"/> DUAL		I.V.&C.	TT	12/17/21	1 OF 3
TOLERANCES ON:		MODEL:	APPD BY:	DATE:	DWG NO:
ANGLES ±1/2° ±0.5°		PTZ-HD30-15-C	BR	12/17/21	IVC2258
FRACTIONS ±1/32" N/A		THIS DOCUMENT IS THE PROPERTY OF IV&C AND MAY NOT BE USED OR REPRODUCED IN WHOLE OR IN PART WITHOUT WRITTEN PERMISSION		SCALE:	REV NO:
DECIMALS .XX ±0.01" ±0.2				N/A	1
.XXX ±0.005" ±0.12					
REVISIONS TO THIS DRAWING MUST BE APPROVED BY APPROPRIATE CERTIFYING BODY					

REVISIONS

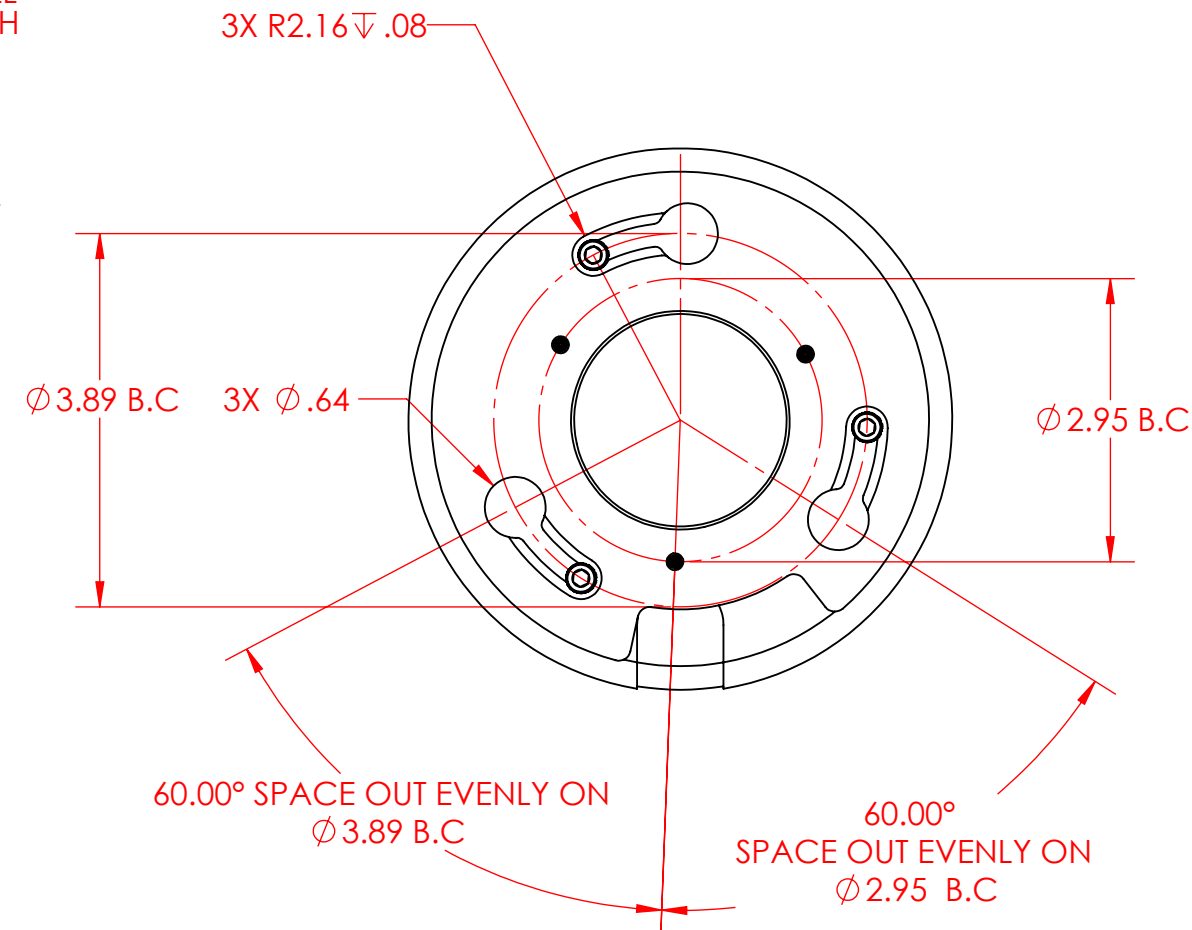
NO.	DESCRIPTION	DATE	BY	APPD
1	ADD MODEL "PTD-HD30-15-C"	01/11/23	TT	BR

3. CAREFULLY ALLIGN
DOME CAMERA
ASSEMBLY INTO SLOTTED
GROOVE ONTO ITEM 1.
ROTATE COUNTER
CLOCKWISE TO
ENGAGE



1. USE PROXIDED 3X WALL
SCREWS TO (ITEM 1) FLUSH
SIDE

2. FASTEN 3X MACHINE SCREWS TO
DOME CAMERA: SCREWS WILL NOT
BE FULLY ENGAGE. SEE NEXT STEP

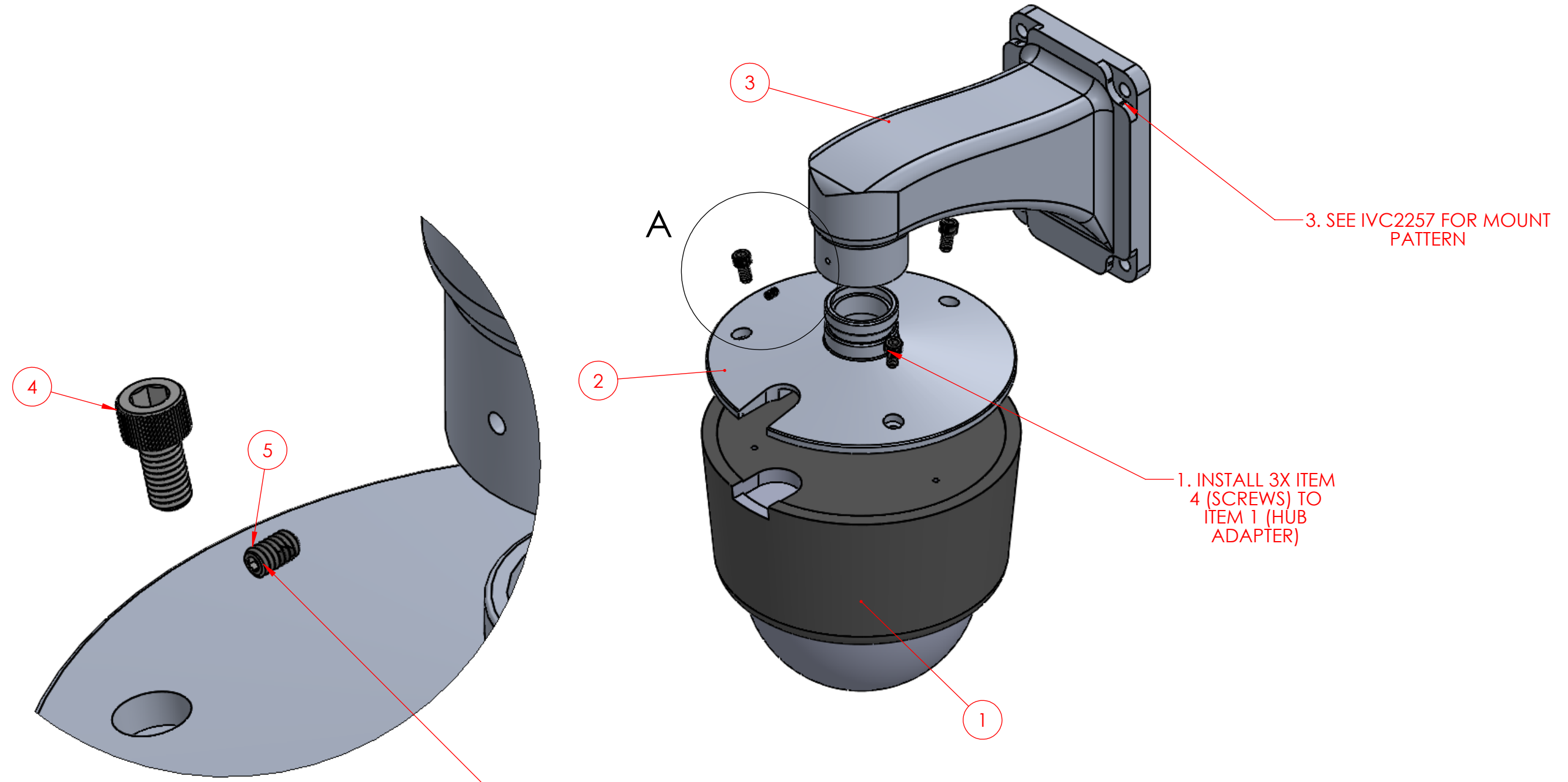


RELEASED FOR PRODUCTION: YES NO

PART NO.		INDUSTRIAL VIDEO & CONTROL			
N/A		330 NEVADA STREET - NEWTON, MA 02460			
		PTZ-HD30-15-C			
DIMENSIONS ARE IN:		DESIGNED FOR:	DRAWN BY:	DATE:	SHEET NO:
<input checked="" type="checkbox"/> INCHES	<input type="checkbox"/> MILLIMETERS	I.V.&C.	TT	12/17/21	2 OF 3
TOLERANCES ON:		MODEL:	APPD BY:	DATE:	DWG NO:
ANGLES	INCHES	PTZ-HD30-15-C	BR	12/17/21	IVC2258
FRACTIONS	MILLIMETERS	THIS DOCUMENT IS THE PROPERTY OF IV&C AND MAY NOT BE USED OR REPRODUCED IN WHOLE OR IN PART WITHOUT WRITTEN PERMISSION		SCALE:	REV NO:
DECIMALS				N/A	1

REVISIONS

NO.	DESCRIPTION	DATE	BY	APPD
1	ADD MODEL "PTD-HD30-15-C"	01/11/23	TT	BR



DETAIL A
SCALE 2:1

2. ALIGN ITEM 1 (HUB ADAPTER) TO ITEM 3 (MOUNT ARM); USE ITEM 5 (SET SCREW) TO ATTACH

RELEASED FOR PRODUCTION: YES NO

PART NO. N/A		INDUSTRIAL VIDEO & CONTROL 330 NEVADA STREET - NEWTON, MA 02460			
		PTZ-HD30-15-C			
DIMENSIONS ARE IN: <input checked="" type="checkbox"/> INCHES <input type="checkbox"/> MILLIMETERS <input type="checkbox"/> DUAL		DESIGNED FOR: I.V.&C.	DRAWN BY: TT	DATE: 12/17/21	SHEET NO: 3 OF 3
TOLERANCES ON:		MODEL: PTZ-HD30-15-C	APPD BY: BR	DATE: 12/17/21	DWG NO: IVC2258
ANGLES	±1/2° ±0.5°	THIS DOCUMENT IS THE PROPERTY OF IV&C AND MAY NOT BE USED OR REPRODUCED IN WHOLE OR IN PART WITHOUT WRITTEN PERMISSION		SCALE: N/A	REV NO: 1
FRACTIONS	±1/32" N/A				
DECIMALS	.XX ±0.01" ±0.2 .XXX ±0.005" ±0.12				
REVISIONS TO THIS DRAWING MUST BE APPROVED BY APPROPRIATE CERTIFYING BODY		YES <input type="checkbox"/> NO <input checked="" type="checkbox"/>			