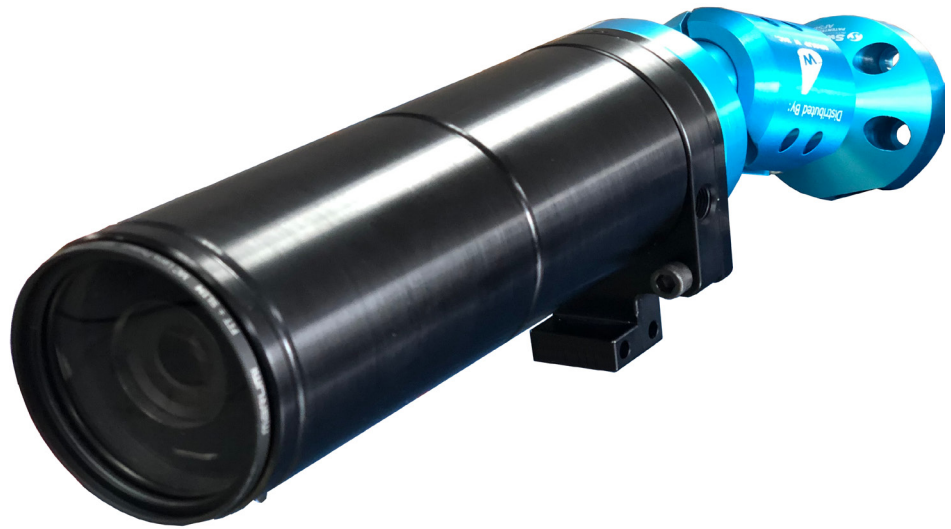


IVC High Speed Video Monitoring System

- **GigE High Speed Camera**
Captures video up to 250 FPS
- **Longwatch Video Historian**
Automatically links video to process events
- **Articulating Arm**
Allows optimal positioning of GigE camera
- **LED Flood Light**
Ultra bright light ensures proper illumination



A complete solution for high speed video monitoring

IVC's high speed video monitoring system includes everything you need to quickly deploy high speed video monitoring in your business.

The system is ideal for monitoring and identifying equipment failures on high speed conveyor belts, production and packaging lines, and robotic assembly lines, across a range of industries.

The solution is comprised of:

- IVC's GigE vision camera
- Longwatch Video Historian
- Articulating arm
- LED flood light

▶ GigE Vision Camera - HS-3430-1

- **Sony IMX287 CMOS processor:** Delivers excellent picture quality at up to 250 frames per second
- **Compact design:** Makes the GigE camera suitable for monitoring in tight industrial spaces
- **H.264 video compression:** H.264 reduces bandwidth requirements to produce better image quality and allow for greater video storage capacity than standard CCTV and IP video
- **IP66-rated enclosure:** Ideal for harsh industrial environments and all-weather applications
- **PoE compliant:** Allows for easy installation by drawing power through the existing data connection



IVC's GigE Vision Camera delivers up to 250 FPS

***A complete list of camera specifications are listed on back.**

▶ Articulating Arm

The articulating arm allows optimal positioning of IVC's GigE vision camera to ensure close up views of manufacturing processes.

- Heavy duty
- 15mm quick release
- Dual 11" articulating arms



▶ LED Flood Light

50 watt LED flood light ensures manufacturing processes are well-lit when captured by IVC's GigE high speed camera.

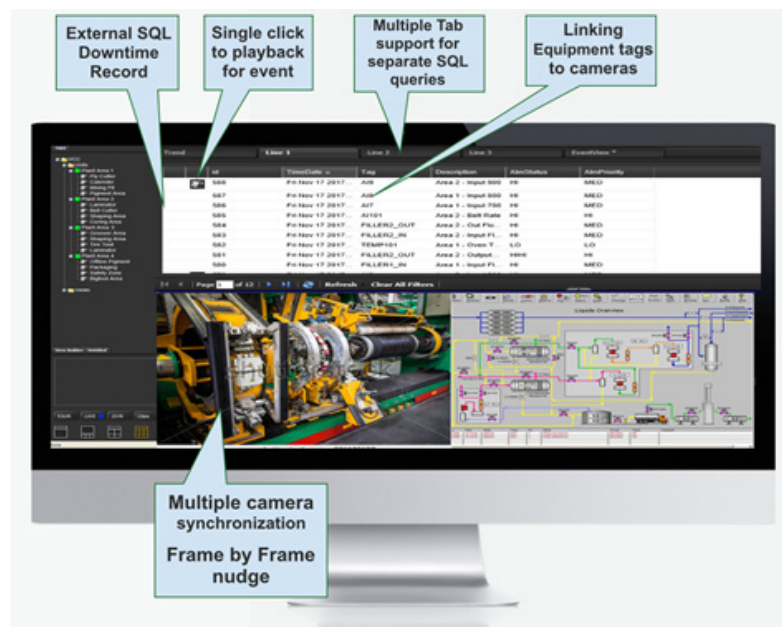
- **Flexible mounting options:** Pole mounted, ceiling mounted, or wall mounted options
- **Ultra bright:** Outputs up to 6500 lumens at 130lm/W or 15mm
- **Weatherproof:** Rated for 50,000 hours



▶ Longwatch Video Historian

IVC's Longwatch Video Historian software automatically links event and historical process data to recorded video. For high speed industrial video applications, Longwatch Video Historian delivers several key benefits:

- **Sync downtime events with recorded video:** Video Historian syncs event data with recorded video to allow for faster, more informed decision-making. Operators can track video of operations based on different criteria (lot number, batch ID, etc.) and overlay process data directly on video images to get a better understanding of what's occurring with a process.
- **Frame-by-frame video playback options:** Video Historian supports several video playback options including super slow-motion playback, and both forward and backward frame-by-frame viewing.
- **Flexible alarm management:** Video Historian supports industry-standard protocols, such as MODBUS and OPC, so you can easily integrate your process control system components with IVC's video system. Video analytics can trigger process automation alarms to alert operators when an unusual video event occurs.
- **Simplicity for operators:** Operators can have as little or as much control over the video system as the application requires.



Recorded Process Video Correlated with Historical SCADA Data

GigE Camera Specifications

Imager	1/2.9" Sony IMX287 CMOS
Pixel size	6.90 μm \times 6.90 μm
Lens mount	C-Mount
ADC	12 bit
Image buffer (RAM)	64 MByte
Quantum efficiency at 529 nm	64 %
Temporal dark noise	3.2 e^-
Saturation capacity	21200 e^-
Dynamic range	74.4 dB
Focal Length	12 mm
Absolute sensitivity threshold	4.1 e^-
YUV color pixel formats	YUV411Packed, YUV422Packed, YUV444Packed
RGB color pixel formats	RGB8Packed, BGR8Packed
Raw pixel formats	BayerRG8, BayerRG12, BayerRG12Packed
Ethernet	IEEE 802.3 1000BASE-T
Resolution	728 (H) \times 544 (V)
I/O	1 input, 3 outputs
Frame Rate	250 fps
Weight	3 lbs.
Voltage Required	12 to 24 VDC or, IEEE 802.3af compliant PoE
Power Consumption	2.43 W at 12 VDC; 2.69 W PoE
Operating Temperature	+5 $^{\circ}\text{C}$ to +45 $^{\circ}\text{C}$
Dimensions	2.5" D \times 7.25" L 13" with mount arm fully extended
Rating	IP66

Recommended Computer Specifications

- CPU: Mid to high speed Intel i7 / i9 or Xeon
- Operating System: Windows 10 Pro or Windows 2016 / 2019 server
- Graphics adapter: NVIDIA Quadro P5000 or better (Nvidia required)
- Memory: Minimum of 32GB RAM
- OS / App Drive: Internal 250 GB PCIe SSD drive
- Data Drive: 2TB or larger. RAID Recommended.
- Network Card: Minimum 2 port GB

Learn More

To learn more about IVC's industrial video systems and how they can help your organization, contact:
Phone: +1 (617) 467-3059 - www.ivcco.com - info@ivcco.com



**MADE IN THE
USA**

© 2020, Industrial Video & Control Co. The Industrial Video & Control Co. logo is a registered trademark of Industrial Video & Control Co.. All other company names and products are trademarks or registered trademarks of their respective companies. All information provided is subject to change without notice. **05/13/2020**

IVC
&
**INDUSTRIAL
VIDEO & CONTROL**