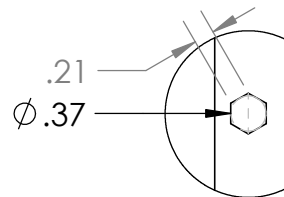
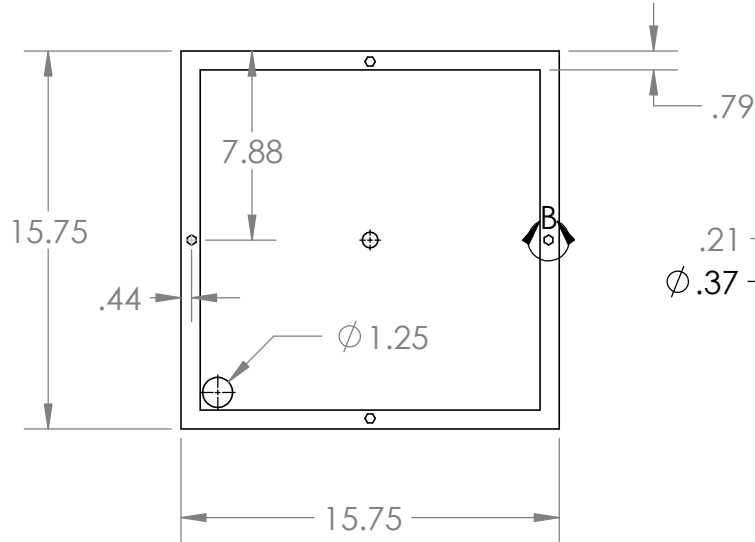
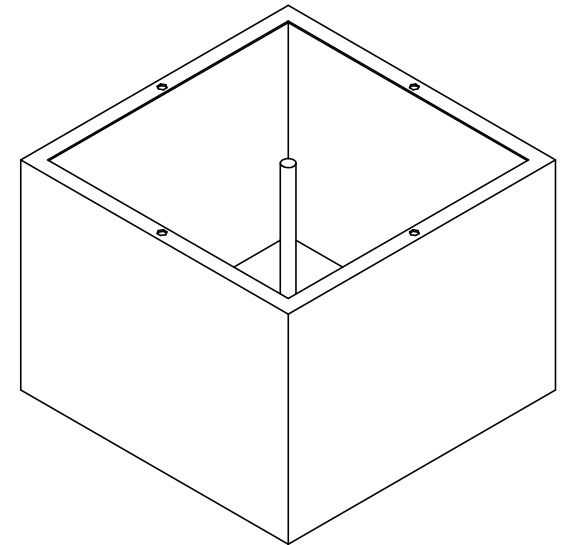


REVISIONS

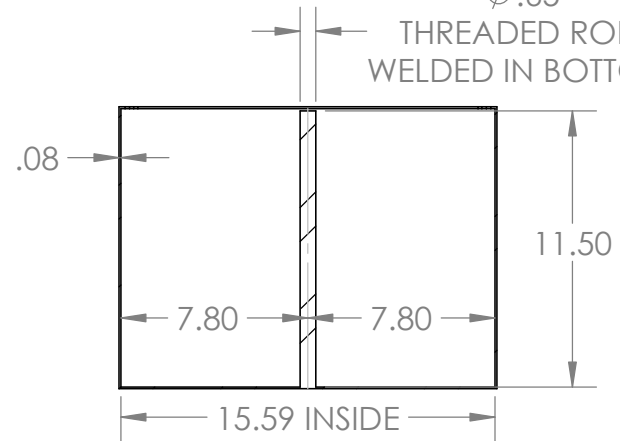
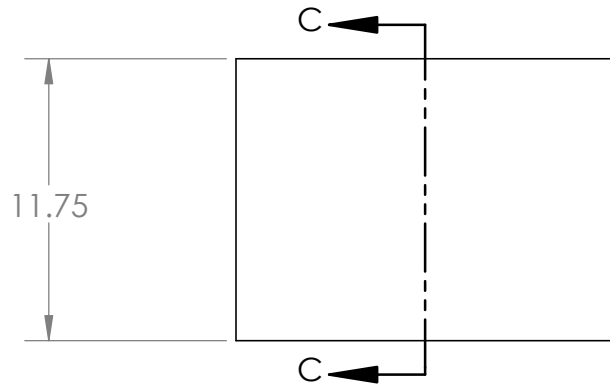


ALL DIMENSIONS  
TYPICAL OF 4

DETAIL B  
SCALE 1 : 2



$\phi .65$   
THREADED ROD  
WELDED IN BOTTOM



SECTION C-C

PART NO.  
JFDI-100-70-2

INDUSTRIAL VIDEO & CONTROL

330 NEVADA STREET - NEWTON, MA 02460

DIMENSIONS ARE IN:  
 INCHES  MILLIMETERS  DUAL  
 TOLERANCES ON:  
 ANGLES  $\pm 1/2^\circ$   $\pm 0.5^\circ$   
 FRACTIONS  $\pm 1/32$  N/A  
 DECIMALS .XX  $\pm 0.01$   $\pm 0.2$   
 .XXX  $\pm 0.005$   $\pm 0.12$

FULL ASSEMBLY  
CAMERA BOX

DESIGNED FOR: I.V.&C.	DRAWN BY: JFDI	DATE: 9/26/2018	SHEET NO: 1 OF 5
MODEL:	APPD BY:	DATE:	DWG NO:

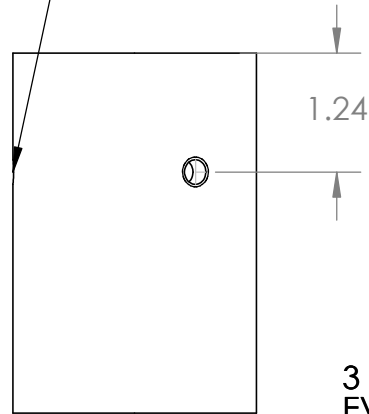
REVISIONS TO THIS DRAWING MUST BE APPROVED BY APPROPRIATE CERTIFYING BODY YES  NO

THIS DOCUMENT IS THE PROPERTY OF IV&C AND MAY NOT BE USED OR REPRODUCED IN WHOLE OR IN PART WITHOUT WRITTEN PERMISSION

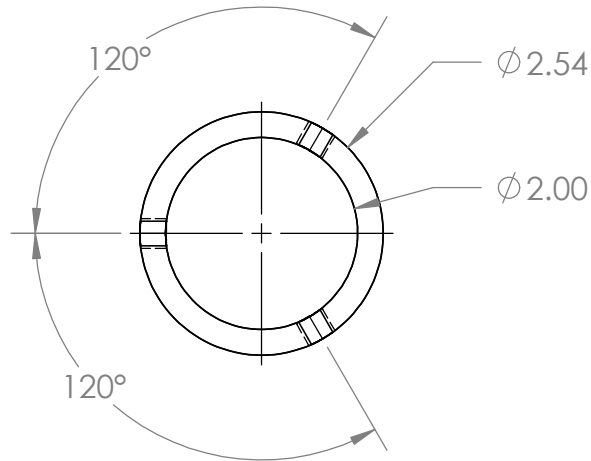
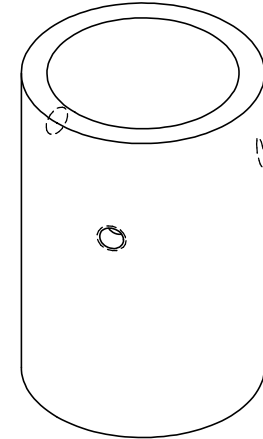
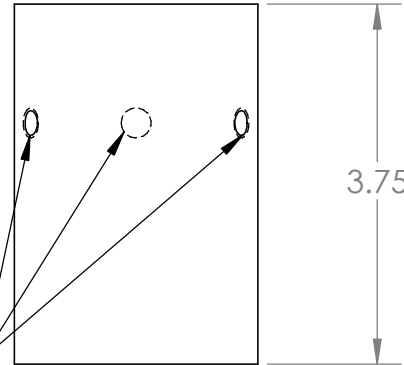
SCALE:  
REV NO:

REVISIONS

5/16-18 Tapped Hole  
TYPICAL 3 PLACES



3 HOLES  
EVENLY SPACED



PART NO.  
JFDI-100-70-2

INDUSTRIAL VIDEO & CONTROL

330 NEVADA STREET - NEWTON, MA 02460

FULL ASSEMBLY  
CAMERA BOX

DIMENSIONS ARE IN:		
<input checked="" type="checkbox"/> INCHES	<input type="checkbox"/> MILLIMETERS	<input type="checkbox"/> DUAL
TOLERANCES ON:		
ANGLES	INCHES	MILLIMETERS
FRACTIONS	$\pm 1/2"$	$\pm 0.5"$
DECIMALS	$\pm 1/32"$	N/A
	.XX $\pm 0.01"$	$\pm 0.2$
	.XXX $\pm 0.005"$	$\pm 0.12$

DESIGNED FOR: I.V.&C.	DRAWN BY: JFDI	DATE: 9/26/2018	SHEET NO: 2 OF 5
--------------------------	-------------------	--------------------	---------------------

MODEL:	APPD BY:	DATE:	DWG NO:
--------	----------	-------	---------

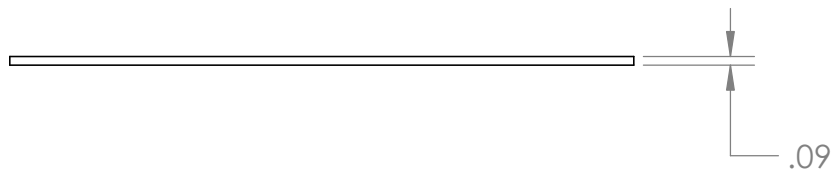
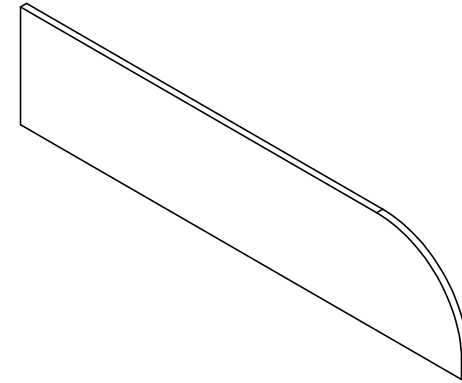
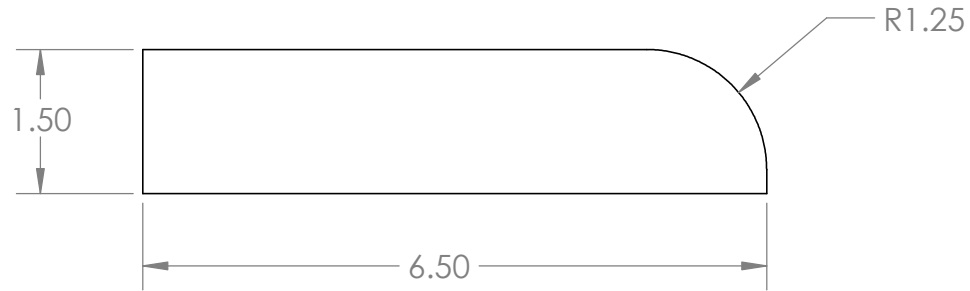
REVISIONS TO THIS DRAWING MUST BE APPROVED BY APPROPRIATE CERTIFYING BODY

YES  NO

THIS DOCUMENT IS THE PROPERTY OF IV&C AND MAY NOT BE USED OR REPRODUCED IN WHOLE OR IN PART WITHOUT WRITTEN PERMISSION

SCALE:  
REV NO:

REVISIONS



PART NO.  
JFDI-100-70-2

INDUSTRIAL VIDEO & CONTROL  
330 NEVADA STREET - NEWTON, MA 02460

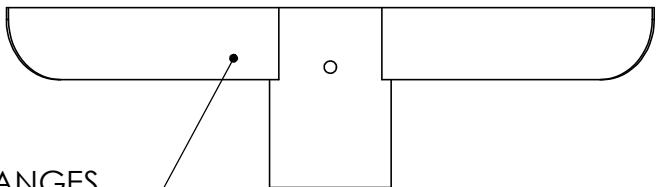
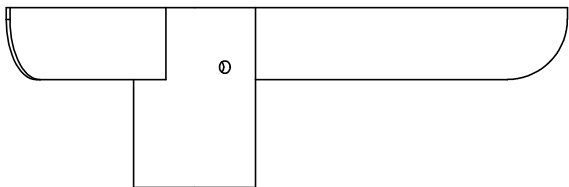
DIMENSIONS ARE IN:  
 INCHES  MILLIMETERS  DUAL  
 TOLERANCES ON:  
 ANGLES                    INCHES    MILLIMETERS  
 FRACTIONS                ±1/2"       ±0.5°  
                                   ±1/32"       N/A  
 DECIMALS                .XX ±0.01"    ±0.2  
                                   .XXX ±0.005" ±0.12

**FULL ASSEMBLY  
CAMERA BOX**

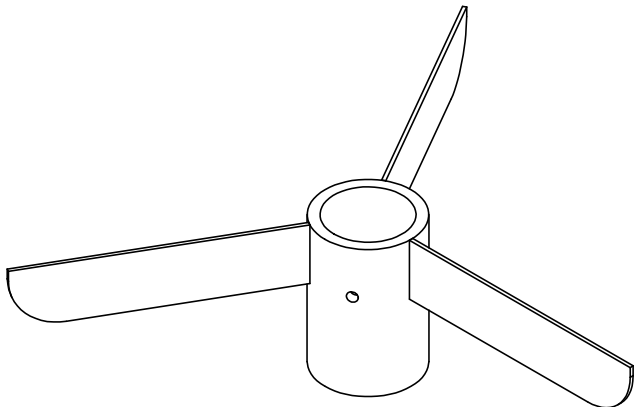
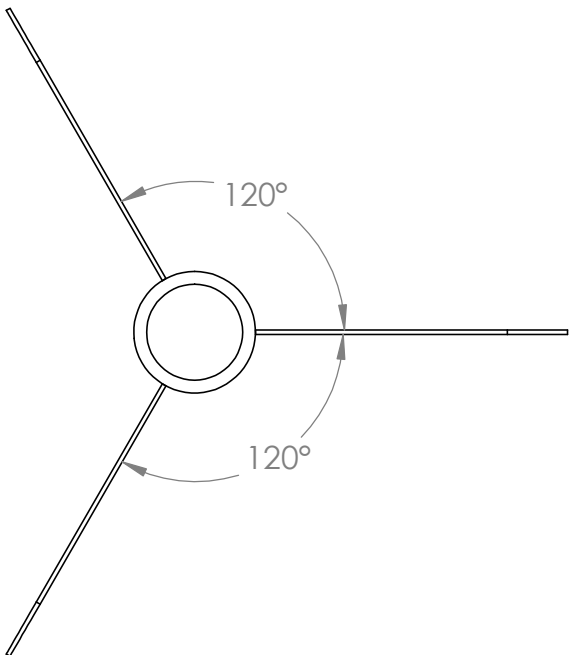
DESIGNED FOR: I.V.&C.	DRAWN BY: JFDI	DATE: 9/26/2018	SHEET NO: 3 OF 5
MODEL:	APPD BY:	DATE:	DWG NO:
THIS DOCUMENT IS THE PROPERTY OF IV&C AND MAY NOT BE USED OR REPRODUCED IN WHOLE OR IN PART WITHOUT WRITTEN PERMISSION			SCALE: REV NO:

REVISIONS TO THIS DRAWING MUST BE APPROVED BY APPROPRIATE CERTIFYING BODY YES  NO

REVISIONS



ORIENT FLANGES AS SHOWN

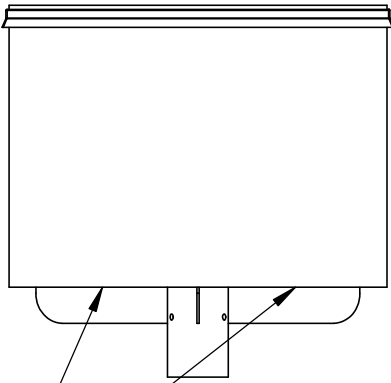
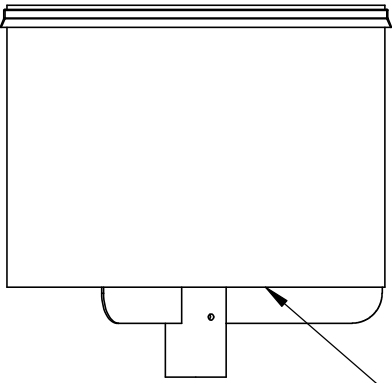


NOTE: FLANGES TO BE OFFSET FROM TAPPED HOLES BY 60 DEGREES SO THAT HOLES ARE DIRECTLY IN BETWEEN FLANGES.

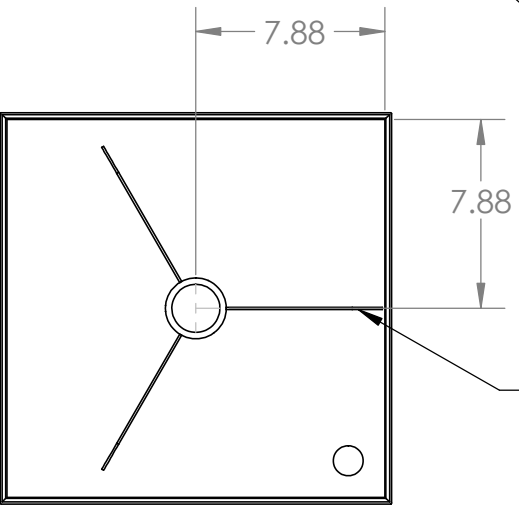
PART NO.	INDUSTRIAL VIDEO & CONTROL
JFDI-100-70-2	330 NEVADA STREET - NEWTON, MA 02460

DIMENSIONS ARE IN:		FULL ASSEMBLY CAMERA BOX				
<input checked="" type="checkbox"/> INCHES	<input type="checkbox"/> MILLIMETERS			<input type="checkbox"/> DUAL		
TOLERANCES ON:		DESIGNED FOR:	DRAWN BY:	DATE:	SHEET NO:	
ANGLES	INCHES	MILLIMETERS	I.V.&C.	JFDI	9/26/2018	4 OF 5
FRACTIONS	$\pm 1/2"$	$\pm 0.5$	MODEL:	APPD BY:	DATE:	DWG NO:
DECIMALS	$\pm 1/32"$	N/A				
	.XX $\pm 0.01"$	$\pm 0.2$	THIS DOCUMENT IS THE PROPERTY OF IV&C AND MAY NOT BE USED OR REPRODUCED IN WHOLE OR IN PART WITHOUT WRITTEN PERMISSION		SCALE:	REV NO:
	.XXX $\pm 0.005"$	$\pm 0.12$				
REVISIONS TO THIS DRAWING MUST BE APPROVED BY APPROPRIATE CERTIFYING BODY		YES <input type="checkbox"/> NO <input type="checkbox"/>				

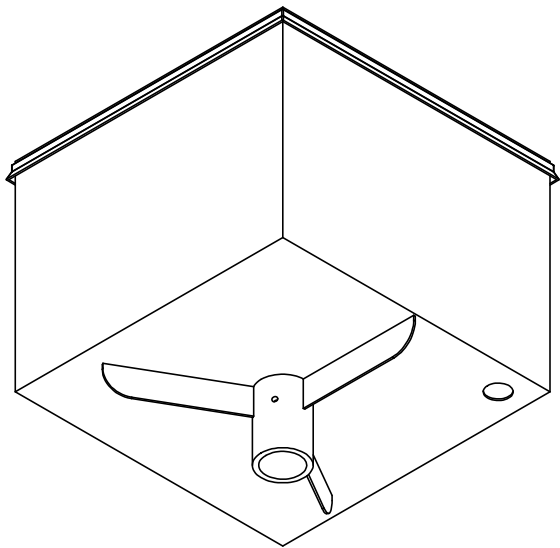
REVISIONS



STITCH WELD



ORIENT FLANGE AS SHOWN



PART NO.		INDUSTRIAL VIDEO & CONTROL			
JFDI-100-70-2		330 NEVADA STREET - NEWTON, MA 02460			
DIMENSIONS ARE IN:		FULL ASSEMBLY CAMERA BOX			
<input checked="" type="checkbox"/> INCHES <input type="checkbox"/> MILLIMETERS <input type="checkbox"/> DUAL		DESIGNED FOR:		DRAWN BY:	DATE:
TOLERANCES ON:		I.V.&C.		JFDI	9/26/2018
ANGLES ±1/2° ±0.5°		MODEL:		APPD BY:	DATE:
FRACTIONS ±1/32" N/A					
DECIMALS .XX ±0.01" ±0.2					
.XXX ±0.005" ±0.12					
REVISIONS TO THIS DRAWING MUST BE APPROVED BY APPROPRIATE CERTIFYING BODY		THIS DOCUMENT IS THE PROPERTY OF IV&C AND MAY NOT BE USED OR REPRODUCED IN WHOLE OR IN PART WITHOUT WRITTEN PERMISSION		SCALE:	REV NO:
YES <input type="checkbox"/> NO <input type="checkbox"/>					

SHEET NO: 5 OF 5