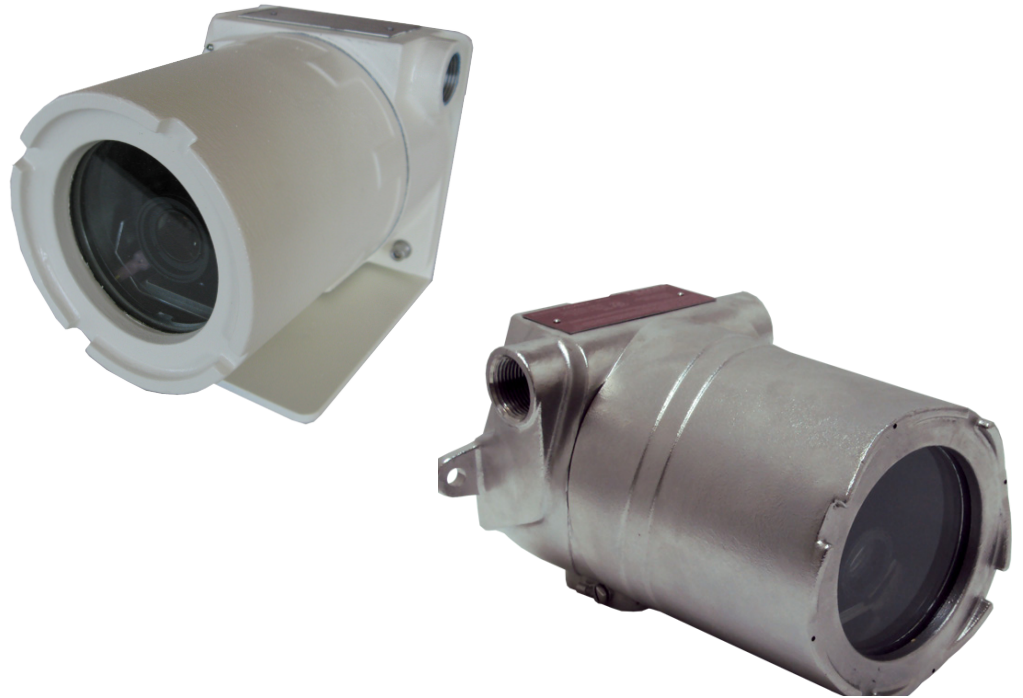


Rugged HD Color Video Camera

AMZ-HD41-2

- 1080p IP video
- 3x motorized zoom
- Integrated IR illuminators
- 12 VDC; 24 VAC; 24 VDC; PoE
- H.264, MJPEG
- Wide dynamic range
- Certified for use in hazardous areas



Compact, weatherproof video camera for harsh environments

The AMZ-HD41-2 is a high quality, high-definition, color video camera. This compact camera provides 3x motor-driven optical zoom and delivers 1080p HD video, up to 30 frames per second. The zoom functions can be controlled automatically and precisely from anywhere using the features of IVC's camera management software. In addition, the camera has a wide dynamic range to increase sensitivity and improve images in varying lighting conditions.

The camera is housed in a heavy-duty, cast-aluminum, weatherproof enclosure suitable for hostile environments and is certified for use in hazardous areas. A 316L stainless steel enclosure option is also available.

The camera is ready for mounting, requiring only power and an IP connection. Wall mount arm is provided. Other mounting options are available.

► specifications

Imager	1/2.8" Progressive Scan CMOS
Resolution	1920 x 1080
Shutter	1 to 1/10,000 Seconds
Minimum Illumination	0 lux to 25m with illuminators
WDR	On/Off/Auto
Image Features	Auto Exposure, Auto White Balance, Auto and Manual Iris, Back Light Compensation
Focus	Auto
Zoom Ratio	3x Optical Zoom
View Angle	33.2° - 83.7°
Focal Length	3 - 9 mm
F-number	1.2 - 2.1
Network	10/100 BASE-T (RJ-45)
Frame Rate	30 FPS
Compression	H.264, MJPEG
Protocols	TCP/IP, HTTP, FTP, SMTP
Weight	8.1 lbs. (Aluminum Enclosure) 10.2 lbs. (Stainless Steel Enclosure)
Voltage Required	(See ordering information)
Power Consumption	1.2A @12 VDC 0.6A @ 24 VDC 0.3A @ 48 VDC (PoE) 0.6A @ 24 VAC
Operating Temperature	-29° to 60° C -10° to 60° C (PoE version)
Storage Temperature	-35° to 65° C
Dimensions	5.50" H x 5.50" W x 7.75" D (Aluminum) 5.50" H x 5.50" W x 8" D (Stainless Steel)
Mount	Wall Mount Standard
Protection Class	NEMA Type 4x, IP66
Regulatory Approvals	
Safety	Conforms to UL STD 61010-1 + UL1203 Certified to CSA STD CSA22.2 NO.30 + CAN/CSA C22.2 No. 25 EN 60079-0:2012, EN 60079-1:2007, EN 60079-31:2009. ATEX 94/9/EC.

Hazardous Area

Class I Groups B, C & D,
Class II Groups E, F & G,
Class III Type 4x
Class I Zone 1 AEx d IIC
Ex d IIC IEC 60529, T6

► features



1080p high-definition broadcast quality images for detailed post-event analysis



30 frames per second for smooth video



Certified for use in hazardous areas

► accessories

- MB-100** Pole Mount Kit
- MB-105** Corner Mount Bracket
- CT-4613** 3/4" NPT C1D1 cable gland

► ordering information

AMZ-HD41-2-V-E

-E	Enclosure	
	Aluminum	
S	Stainless Steel	
-V	Voltage Required	
	12	12 VDC
	24A	24 VAC
	24D	24 VDC
PoE	IEEE 802.3af compliant PoE	

► IVC camera management software

Point & click camera management & control

Robust, enterprise class software to manage and control your cameras and video from anywhere in the world.



MADE IN THE USA

330 Nevada St., Newton, MA 02460 www.ivcco.com 617-467-3059

© 2019, Industrial Video & Control Co. The Industrial Video & Control Co. logo is a registered trademark of Industrial Video & Control Co.. All other company names and products are trademarks or registered trademarks of their respective companies. All information provided is subject to change without notice. 1/7/2019

IVC
INDUSTRIAL
VIDEO & CONTROL